



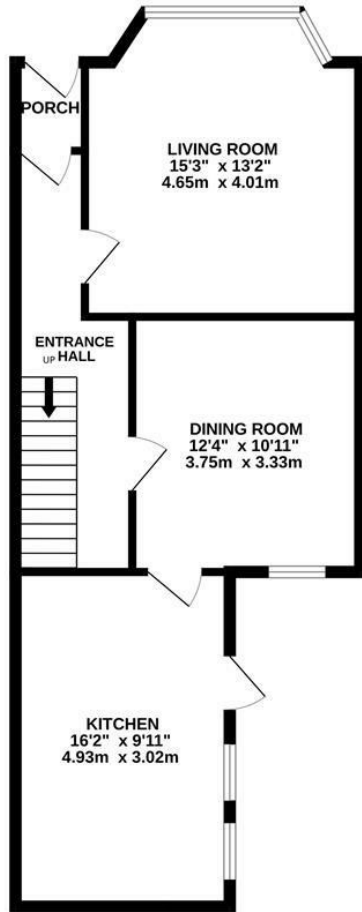
Alfred Road, Hastings TN35 5HX

Offers in excess of £375,000

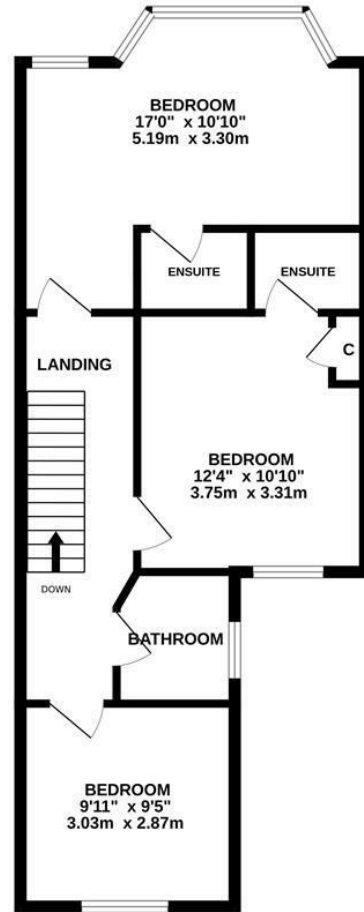


A beautifully presented three bedroom, three bathroom EDWARDIAN FAMILY HOME with sea views, situated in an enviable CLIVE VALE setting. It's located just a short stroll from local shops at Ore Village, popular schools, transport links and access to Hastings Country Park. Hastings Old Town is also within easy reach offering a collection of independent shops, restaurants and the seafront. The accommodation here is WELL PRESENTED THROUGHOUT and benefits from a wealth of character features including exposed wooden floorboards and high ceilings. You enter on the ground floor where there is a bright living room with a wood-burning stove and a large bay window framing a SOUTHERLY ASPECT, the second reception room enjoys an original tiled fireplace and is currently used as a dining room. There is a stylish EAT-IN KITCHEN positioned at the rear of the property with a feature brickwork wall and space for a range style oven, providing access out to the garden. On the first floor there are THREE DOUBLE BEDROOMS together with a contemporary bathroom with a bath and shower over. The two large bedrooms also benefit from modern

GROUND FLOOR
587 sq.ft. (54.5 sq.m.) approx.



1ST FLOOR
587 sq.ft. (54.5 sq.m.) approx.



TOTAL FLOOR AREA : 1173 sq.ft. (109.0 sq.m.) approx.

Whilst every attempt has been made to ensure the accuracy of the floorplan contained here, measurements of doors, windows, rooms and any other items are approximate and no responsibility is taken for any error, omission or mis-statement. This plan is for illustrative purposes only and should be used as such by any prospective purchaser. The services, systems and appliances shown have not been tested and no guarantee as to their operability or efficiency can be given.
Made with Metropix ©2025

